

Lubrication Equipment

- HL-1 Oil Grease Injector -

INDICATION

HL-1 Oil Grease Series Features:

- Higher pressure up to 250bar (3600PSI)
- Adjustable flow rate output
- High strength carbon steel materials
- Contact us for custom design
- Testing standard JBZQ Technology standard

Hudson
Industry

Single Line Oil Grease Injector HL-1 Series

**HUDSUN
INDUSTRY CO., LTD**
Making Your  Machine Most Effective



Characteristics of Product: ▼

The Hudson Industry HL-1 oil grease injector is made to accurately provide a certain amount of oil or grease to each lubrication location by delivering grease line. The oil grease injector may be put in a compact working area and allows for a longer or shorter lubrication point distance, making it the ideal option for machinery or equipment used in challenging working environments. The HL-1 oil grease injector, which is operated and pressured by a lubrication pump to push lubricates to each lubricating point, is also known as a directly single line metering device for lubrication equipment.

The state of oil grease lubrication is adjusted with a clearly visible pin according to the various operating circumstances by adjusting the screw to get adequate lubrication. Our HL-1 oil grease injector may be mounted on pre-made or specially made manifolds, which we can offer upon request.

Ordering Code & Technical Data: ▼

HL series oil grease injector
By Hudson Industry

HL - 1 - G - C - *

Injector Series Code

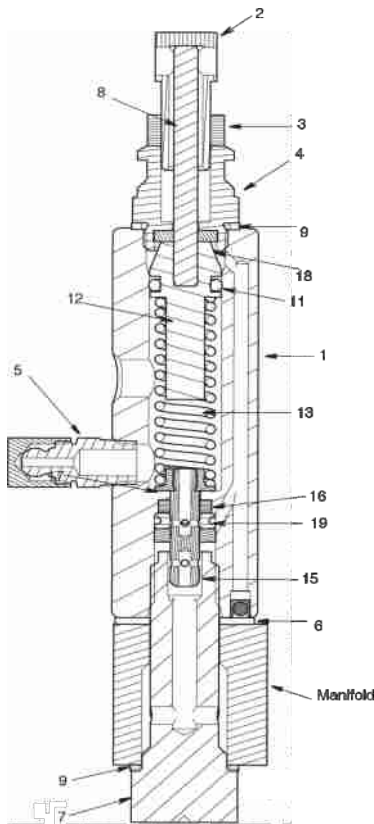
G Type Design

C = Main materials is Carbon Steel (Normal)
S = Main materials is Stainless Steel

For further information

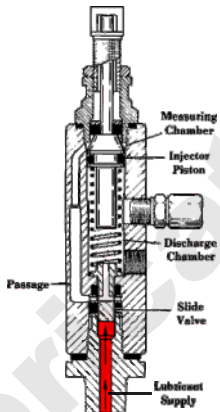
Technical Data		Output Volume Per Cycle			
Maximum Operating Pressure	3500 psi (24 MPa, 241 bar)	Description	Turning Nos.	Volume	
Recommended Operating Pressure	2500 psi (17 MPa, 172 bar)			mm	ml/cc
Reset Pressure	600 psi (4.1 MPa, 41 bar)	Max. Adjustment	0	2.03	1.31
Wetted Parts	Carbon steel, stainless steel, copper, fluoroelastomer	360° Clockwise	1	1.80	1.16
Recommended Fluids	N.L.G.I. #2 grease down to 32° F (0° C)	360° Clockwise	2	1.57	1.02
		360° Clockwise	3	1.35	0.87
		360° Clockwise	4	1.12	0.72
		360° Clockwise	5	0.89	0.57
		360° Clockwise	6	0.66	0.43
		360° Clockwise	7	0.43	0.28
		Min. Adjustment	8	0.20	0.13

HL-1 Design Structure :



Nos.	Description
1	Injector House
2	Adjusting Screw
3	Lock Nut
4	Packing
5	Zerk Fitting
6	Gasket
7	Adapter Bolt
8	Indicator Pin
9	Gasket
11	O-ring
12	Piston
13	Spring
14	Plunger
15	Washer
16	Gasket
17	Adapter Bolt
18	Adapter
19	Inlet Disc

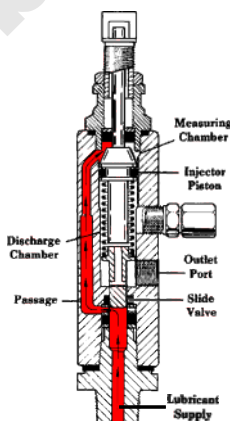
HL-1 Oil Grease Injector Operation :



First Stage (During Pause Time)

The first stage is the normal position of the HL-1 injector, while the discharge chamber filled with oil, grease or lubricant comes from the previous stroke, in the meanwhile, relieved from pressure and release the spring. The spring of the HL-1 injector is only for re-charging purposes.

The inlet valve opens under the high pressure of entering oil or grease, directing the lubricant to the measuring chamber where above the HL-1 injector piston.



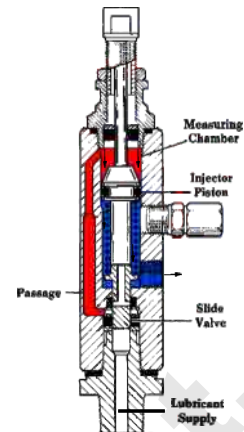
Second Stage (Pressurized And Lubricating)

The second stage is building up the pressure and leading the high-pressure lubricant to push up the piston valve and uncover the passage aside, is admitted the oil or grease flow into the measuring chamber on the top of the piston, forcing the piston down, while the indicator rod retracts. In the meantime, the measuring chamber is filling with lubricant and pressurizing the lubricant from the discharge chamber through the outlet port to lubrication point.

Single Line Oil Grease Injector HL-1 Series

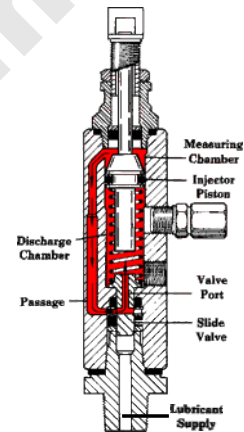
Third Stage (After Lubricating Discharge)

After the completed of HL-1 injector piston stroke, the pressure pushes the plunger of the inlet valve past its passage back, shut off admission of lubricant to previous aside passage. While the discharge of grease or oil to outlet port is completed, the injector piston and inlet valve remain to its normal position until lubricant pressure to each lubrication point through the supply line.

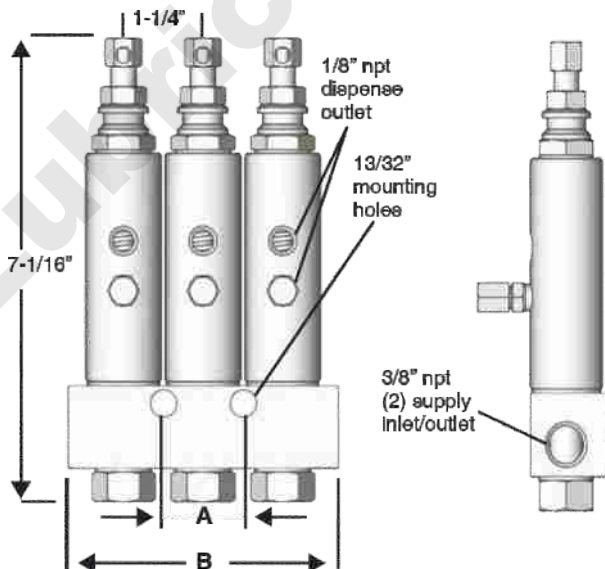


Fourth Stage (Pressure Relieved)

After pressure venting in the HL-1 injector, the injector spring expands accordingly, causing the inlet valve to move, so that the passage and discharge chamber is connected by a valve port. The oil and grease supply line which connected with pump and injector must be relieved from pressure since the pressure at the inlet port of injector must drop below 4.1Mpa. Further expansion of the spring causes the piston to move up-ward, forcing the inlet valve to the closed position, its position opens the port from the measuring chamber, permitting oil or grease to be transferred from the top chamber to the discharge chamber. While the presetting amount of lubricant is transferred from top chamber to relieved chamber and the pressure is vented then, the HL-1 injector returns to its normal working position and ready for next lubrication cycle.



HL-1 Oil Grease Injector General Dim. With Manifold: ▼



Description	Dimension "A"	Dimension "B"
Injector, HL-1, One Point	N/A	63.00mm
Injector, HL-1, Two Point		76.00mm
Injector, HL-1, Three Point	31.70mm	107.50mm
Injector, HL-1, Four Point	63.40mm	139.00mm
Injector, HL-1, Five Point	95.10mm	170.50mm
Injector, HL-1, Six Point	126.80mm	202.70mm



**INTERNATIONAL
LUBRICATION EQUIPMENT**

HUDSUN INDUSTRY CO., LTD

No.3 Factory Building, 118 ZhenNingXi Road,
Zhenhai, Ningbo City, Zhejiang Province, 315221
China
Tel: +86-574-86303599
Fax: +86-574-86303380
<http://www.lubrication-equipment.com>