

Lubrication Equipment

- DF/SV Grease Valve -

INDICATION

DF/SV Series Features:

- 4/3 Directional valve solenoid operated & control
- Max. pressure operation up to 20Mpa/200bar
- Powerful solenoid and reliable valve, different voltage available
- Contact us for custom design
- Testing standard JBZQ Technology standard

Solenoid Directional Valve DF/SV Series

**HUDSUN
INDUSTRY CO., LTD**
Making Your Machine Most Effective



Characteristics of Product: ▼

Grease solenoid directional valve DF, SV series is used for electric terminal type centralized lubrication system, received the switching single from electric control box controlled by a pressure control valve in order to control the grease solenoid directional DF, SV valve to achieve the two oil main pipes in charge of the alternative grease supplying.

Grease solenoid directional valve DF, SV series is used of cylindrical structure, so that the valve opening and closing tightly, to maintain high pressure for a long time without leakage. The usage of powerful solenoid and spring buffer, making the action of switching much more reliable.

Ordering Code: ▼

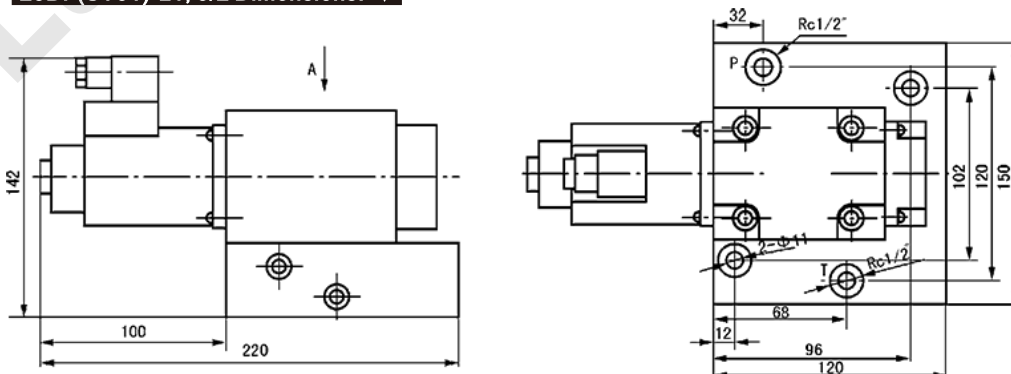
| | | | | |
|--|--------|---|-------------|---|
| By Hudsun Industry | HS - 3 | 4 | DF (SV) - L | 2 |
| 3 or 2 Switching Position | | | | |
| 4 or 3 Way | | | | |
| Grease Solenoid Directional Valve DF/SV Series | | | | |
| Max. Pressure 20Mpa/200Bar | | | | |
| Number Of Outlet | | | | |

Technical Data: ▼

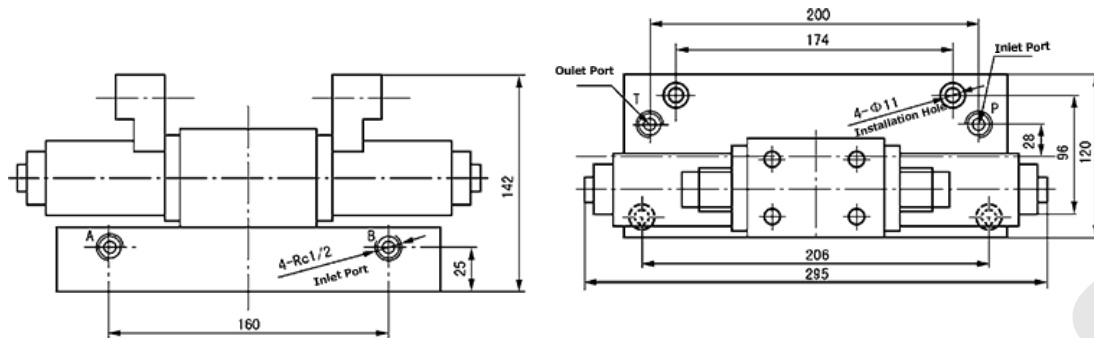
| Model | | Max. Pressure | Flow Rate | Port | Return Port | Switch Frequency | Temperature | Weight |
|----------|-------|---------------|-----------|------|-------------|------------------|-------------|--------|
| Code | Equal | | | | | | | |
| 34DF-L2 | SV-32 | 20Mpa | 3L/min | 4 | 10Mpa | 30 | 0-50°C | 17Kgs |
| 23DFF-L1 | SV-31 | | | 3 | | | | 10Kgs |

| Power | Output | Current | Inst. Current | Voltage Fluctuation | Humidity | Loading | Insulation Grade |
|----------------|--------|---------|---------------|---------------------|----------|---------|------------------|
| AC220V 50HZ | 30W | 0.6A | 6.5A | -15 ~ 10% | 0 ~ 95% | 100% | H |

23DF(SV31)-L1, 3/2 Dimensions: ▼



34DF(SV32)-L2, 4/3 Dimensions: ▼



Working Principle Of DF / SV : ▼

Position 1:

Finished of supplying oil, solenoid “a” and solenoid “b” are in powered off. And demagnetization condition, oil inlet port closed, the lubrication pump not working. In this position, two main oil supply pipes are opened to the oil tank.

Position 2:

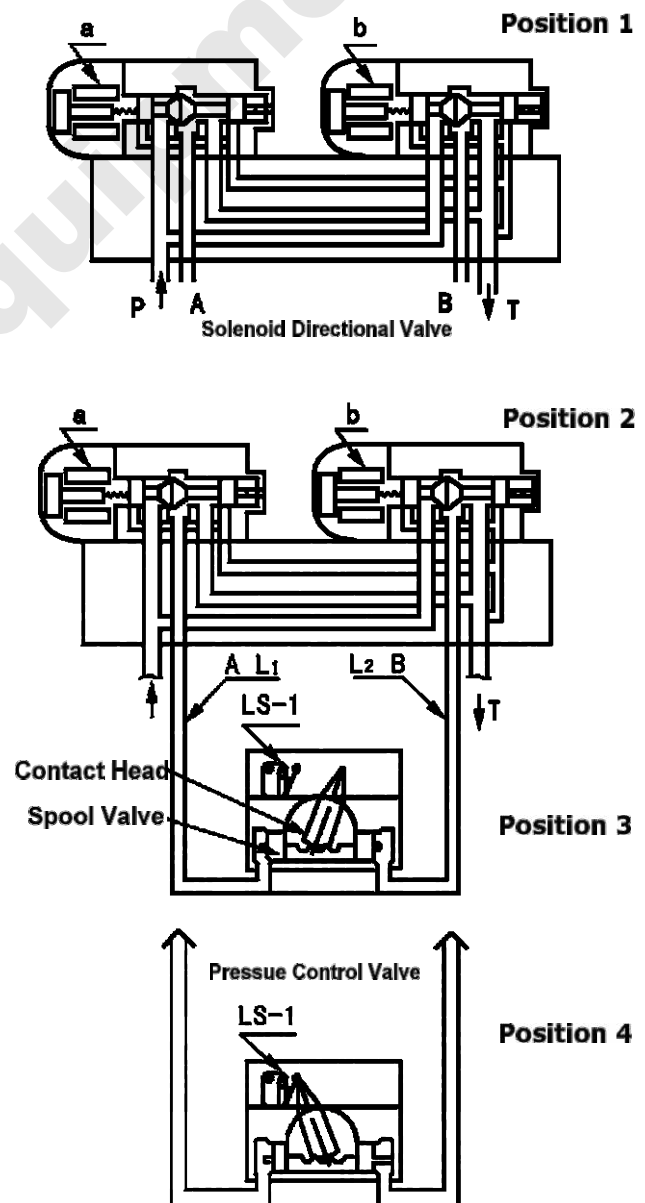
While starting the pump, the solenoid “a” power on and in a magnetization condition, the grease or oil from the pump output was transferred by the A port to the grease/oil main supply pipe L1, main pipe L2 is still open to the grease/oil reservoir.

Position 3:

The pressure control valve is installed at the end of main supply pipe, while the pressure at the end of the main pipe L1 exceeds the set pressure of the pressure control valve, pushing spool to the right position.

Position 4:

When the spool moves to the right position, pull the linkage with its contact head to the left, make the limit switch LS-1 in the connected state, sending signal to the control cabinet, in order the solenoid “a” power on, the pump stops working, comes back to S-1 position. When the grease/oil feeding in the next time, the solenoid “b” power on, the grease/oil is transferred to main supply pipe L2 by B port, the pressure control valve controls the travel switch in the power off condition.





**INTERNATIONAL
LUBRICATION EQUIPMENT**

HUDSUN INDUSTRY CO., LTD

No.3 Factory Building, 118 ZhenNingXi Road,
Zhenhai, Ningbo City, Zhejiang Province, 315221 China
Tel: +86-574-86303380
<http://www.lubrication-equipment.com>