

Lubrication Equipment - DV/SDPQ Distributor -

INDICATION

DV/SDPQ Series Features:

- High duty and performance of durability operation
- More than 14 series of model for different lubrication requirement point
- Easily observation of lubrication condition through indicator directly
- Equal Code With DV & SDPQ-L (DSPQ-L):
 - DV-31H (1SDPQ-L1 Or 1DSPQ-L1) ; DV-32H (2SDPQ-L1 Or 2DSPQ-L1) ; DV-33H (3SDPQ-L1 Or 3DSPQ-L1) ; DV-34H (4SDPQ-L1 Or 4DSPQ-L1)
 - DV-41H (1SDPQ-L2 Or 1DSPQ-L2) ; DV-42H (2SDPQ-L2 Or 2DSPQ-L2) ; DV-43H (3SDPQ-L2 Or 3DSPQ-L2) ; DV-44H (4SDPQ-L2 Or 4DSPQ-L2)
 - DV-51H (1SDPQ-L3 Or 1DSPQ-L3) ; DV-52H (2SDPQ-L3 Or 2DSPQ-L3) ; DV-53H (3SDPQ-L3 Or 3DSPQ-L3) ; DV-54H (4SDPQ-L3 Or 4DSPQ-L3)
 - DV-61H (1SDPQ-L4 Or 1DSPQ-L4) ; DV-62H (2SDPQ-L4 Or 2DSPQ-L4)

Distributor DV, SDPQ (DSPQ) Series

**HUDSUN
INDUSTRY CO., LTD**
Making Your  Machine Most Effective

Characteristics of Product: ▼



Distributing valve DV/SDPQ(DSPQ) series is manufactured to equip in industrial dual line system, the lubricant of grease or oil is delivered appropriately to each lubrication spot transferred by main grease supply line, and pressurized by electric lubrication pump and transferred.

Distributing valve DV/SDPQ(DSPQ) series is equipped with motion indicator which is for observation during working, further, the volume of grease is available to be adjusted according to different lubrication requirements. The supply outlet of distributing valve DV is designed on the bottom, therefore, the movement of piston inside the distributing valve will make lubricate from the bottom outlet, not a matter of the main or pilot piston position.

Ordering Code: ▼

4 SDPQ(DSPQ) - L 1

Nos. of grease feeding port

Dual line distributing valve,
one way grease/oil outlet

Max. operation pressure 200bar/20Mpa

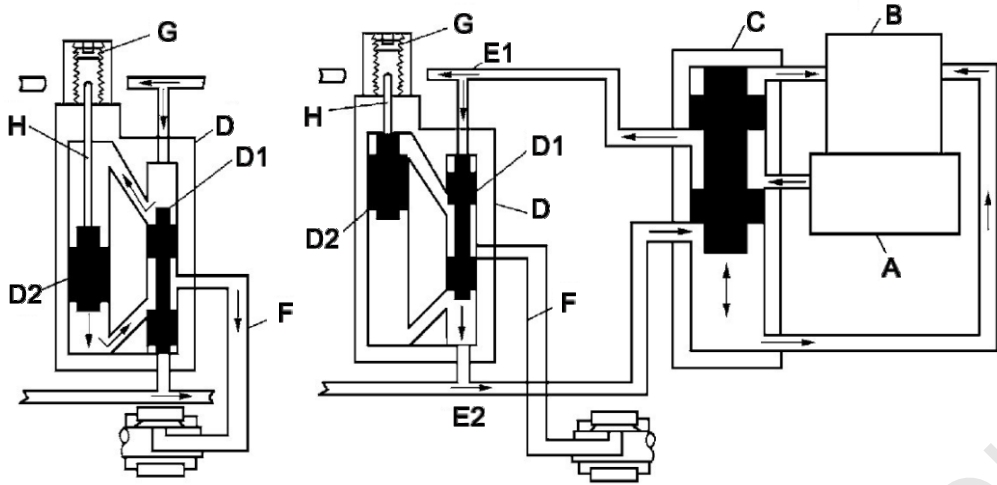
Grease feeding volume = 1 ; 2 ; 3 ; 4 series

Technical Data: ▼

Original	New	Nominal Pressure Bar	Movement Pressure Bar	Feeding Ports	Feeding Volume Each Port Per Cycle (MI)			Pressure Loss MI	Setting Volume When Adj. Bolt Turn Each Round (MI)	Weight Kg
					Nos.	Max.	Min.			
DV-31H	1SDPQ-L1	200	=15	1	1	1.2	0.2	0.50	0.06	0.8
DV-32H	2SDPQ-L1			2						1.4
DV-33H	3SDPQ-L1			3						1.8
DV-34H	4SDPQ-L1			4						2.3
DV-41H	1SDPQ-L2			1	2	2.5	0.6	0.55	0.10	1.0
DV-42H	2SDPQ-L2			2						1.9
DV-43H	3SDPQ-L2			3						2.7
DV-44H	4SDPQ-L2			4						3.2
DV-51H	1SDPQ-L3		=12	1	3	5.0	1.2	0.63	0.15	1.4
DV-52H	2SDPQ-L3			2						2.4
DV-53H	3SDPQ-L3			3						3.5
DV-54H	4SDPQ-L3			4						4.6
DV-61H	1SDPQ-L4			1	4	14.0	3.0	0.63	0.68	2.4
DV-62H	2SDPQ-L4			2						4.2

Note: The use of medium cone penetration of not less than 295 (25 , 150g) 1 / 10mm grease (NLGI0 # 1 #) or viscosity grade greater than N68 lubricating oil; the use of ambient temperature -10 ~ 80 ; the working pressure is below 100bar if the oil as medium.

DV, SDPQ(DSPQ) Work Principle:



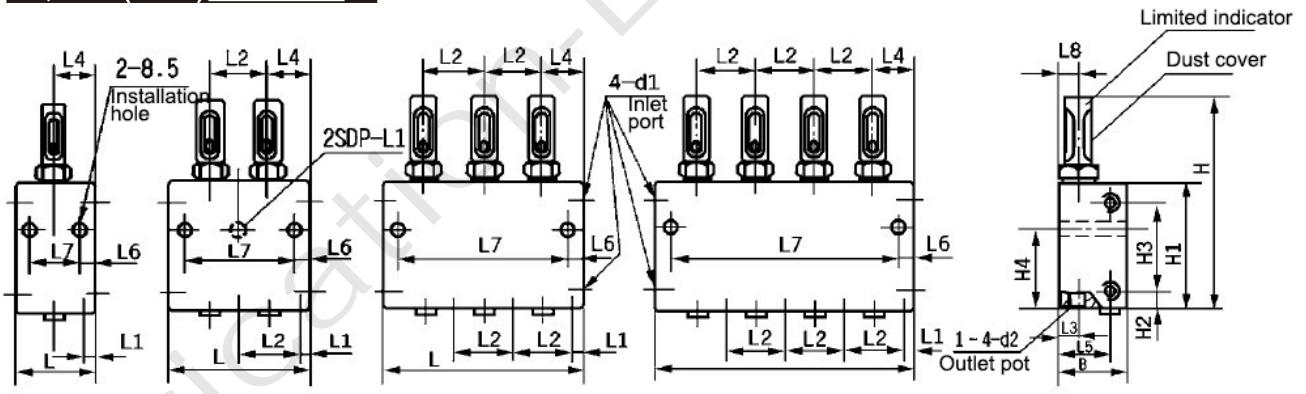
- Parts:**
 A. Lubrication pump;
 B. Grease reservoir;
 C. Directional valve;
 D. lubrication divider;
 D1. Pilot piston;
 D2. Main piston;
 E1. Grease supply pipe;
 E2. Grease supply pipe;
 F. Grease Feeding pipe;
 G. Adjustment bolt;
 H. Indicator

The grease was transferred by the pump into the lubrication divider D through grease supply pipe E1. The top cavity D1 of pilot piston is pressurized when grease enters, pushing the pilot piston down while the bottom cavity connects to grease supply pipe and unloads pressure.

When the pilot piston D1 moves down, the top cavity of main piston connects to the top cavity of pilot piston and the bottom cavity of main piston connects to the feeding port, the grease transfers to the top cavity of main piston, pushing the main piston down forward, squeezing the grease to the lubrication point through the grease supply pipe E1, it is the one grease feeding operation.

By changing the grease supplying pipe E2 starts the second grease feeding operation, the divider is working aforementioned action in the same order reverse. The each feeding port is determined by the diameter and stroke of main piston, and modifying the stroke of main piston by adjustment bolt G, to regulate the grease volume in operation range.

DV, SDPQ(DSPQ) Dimensions:



Model	L	B	H	L1	L2	L3	L4	L5	L6	L7	L8	H1	H2	H3	H4	d1	d2
DV-31H (1SDPQ-L1)	44								10	24							
DV-32H (2SDPQ-L1)	73								-	-							
DV-33H (3SDPQ-L1)	102	38	104	8	29		22.5	27			82	64		42	40		
DV-34H (4SDPQ-L1)	131										111		11				
DV-41H (1SDPQ-L2)	50					11					30						
DV-42H (2SDPQ-L2)	81										61						
DV-43H (3SDPQ-L2)	112	40	125		31		25	29			92	76		54	48		
DV-44H (4SDPQ-L2)	143										123					Rc3/8	Rc1/4
DV-51H (1SDPQ-L3)	53			9.5					10		33						
DV-52H (2SDPQ-L3)	90										70						
DV-53H (3SDPQ-L3)	127	45	138		37	14	28	34			107	14	83	13	53		
DV-54H (4SDPQ-L3)	164										144						
DV-61H (1SDPQ-L4)	62										42						
DV-62H (2SDPQ-L4)	108	57	149	10	46	29	33	45			88	20	89	16	56		



INTERNATIONAL LUBRICATION EQUIPMENT

HUDSUN INDUSTRY CO., LTD

No.3 Factory Building, 118 ZhenNingXi Road,
Zhenhai, Ningbo City, Zhejiang Province, 315221 China
Tel: +86-574-86303599
Fax: +86-574-86303380
<http://www.lubrication-equipment.com>